

TECHNIMONO



DESIGN FEATURES

FULL 5 AXIS CNC CONTROL

GALVANIZED RAILS AND TABLE

TOUCH SCREEN CONTROL

SIMPLE, EASY TO USE SOFTWARE

CAD/CAM SYSTEM FOR USE WITH TEMPLATES AND DXF FILES

ONBOARD CAMERA

BLADE THICKNESS AND MATERIAL MEASURING PROBES

MONOBLOCK CONSTRUCTION

Farnese Australia was founded in 2000 by the Farnese family, whose members have decades of combined professional experience and expertise in both the global stone industry and the local stone machinery manufacturing industry. We are the only designer and manufacturer of stone fabrication machinery in Australia and our machines have found homes throughout Australia, New Zealand, the United States, the United Kingdom, and Vietnam.

With over 20 years of experience in the stone industry, the team at Farnese have the experience it takes to design, install and maintain the equipment needed in your industry.

The **TECHNIMONO CNC BRIDGESAW** from Farnese Australia is a full 5 axis CNC controlled saw.

Sharing the same DNA as the **TECHNICUT**, but constructed on a **MONOBLOCK** platform, this saw will satisfy all your production requirements.

Machines in the Farnese range are renowned for their easy to use software and time saving capabilities.

The CAD/CAM system supplied with the machine makes it a breeze to work with templates or DXF files, and allows any 2D shapes to be programmed for cutting, including vacuum moves.

The control pendant also features a touch screen.



Ability to import DXF drawings from Digital Measuring Devices - E LASER, PROLINER, etc

With the aid of Digital Measuring Devices, you will be able to measure a job directly on site, create the cutting drawings on your preferred CAD and send them directly to the Technimono for cutting, saving valuable time and reducing errors.

Onboard Camera

Using the onboard camera, fabricators can capture an image of the whole slab on the table, then overlay the cutting program at the control panel, making it easy to avoid faults in natural materials.

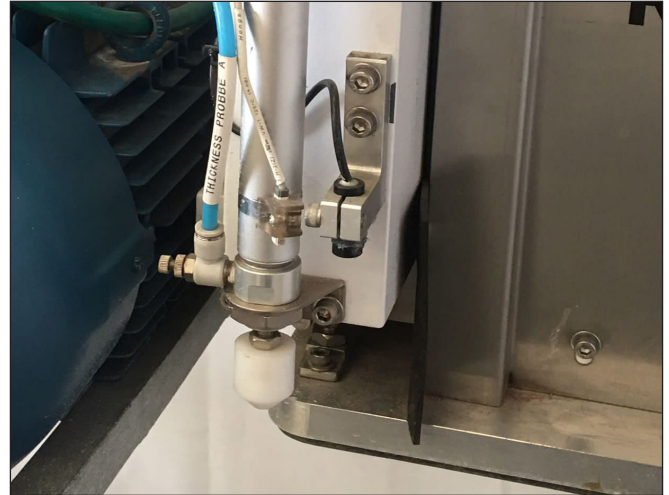
Vacuum Manipulators

The vacuum manipulators really are a very important part of the sawing operation and process. Not only does it give you the opportunity to make blind cuts with the saw but it also helps moving pieces around the table and from the table to transportation frames. This reduces physical effort for the operator, resulting in fewer injuries.

Material Measuring Probe.

The material measuring probe is used to measure the thickness of the material being cut, which is critical when you cut at 45 degrees for mitre cuts.

When we cut at 45 degrees, we measure two points on each cut (the beginning and the end of the cut) so that we can compensate for the thickness variation as we cut with the blade.



Blade Thickness Probe.

This allows for a blade's diameter to be monitored prior to cutting. Your preset blade parameters are then automatically adjusted so the blade only cuts the stone and not the table, removing the need for any manual adjustment.



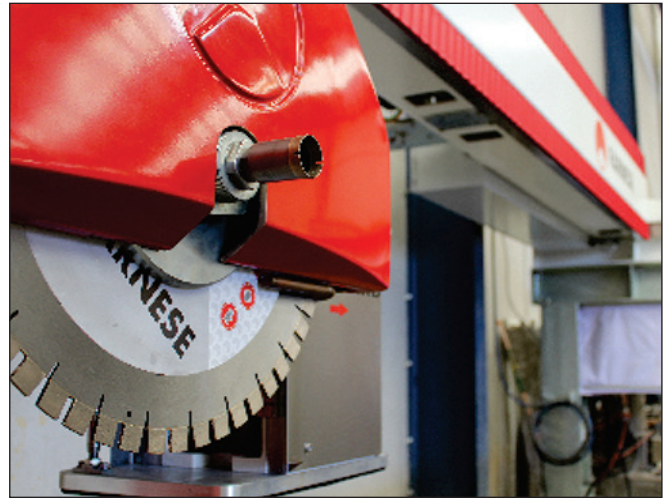
Laser Cutting Guide

The Technicut may be a full CNC controlled 5 axis machine, but it's still possible to use the machine in manual or semi automatic mode, as if it was a standard bridge saw. The operator is able to control movement of the cutting head for quick manual cuts, assisted by the laser cutting guide.

In semi automatic mode, the operator can program cuts in the X and Y axis for quick trimming of rectangular shapes.

Centre Waterfed Spindle with 1/2 GAS Fitting

The 1/2" GAS fitting on the spindle allows for a drill or milling tool to be attached. The cutting head has the ability to tilt 90° and rotate up to 360°.



Automatic Lubrication System

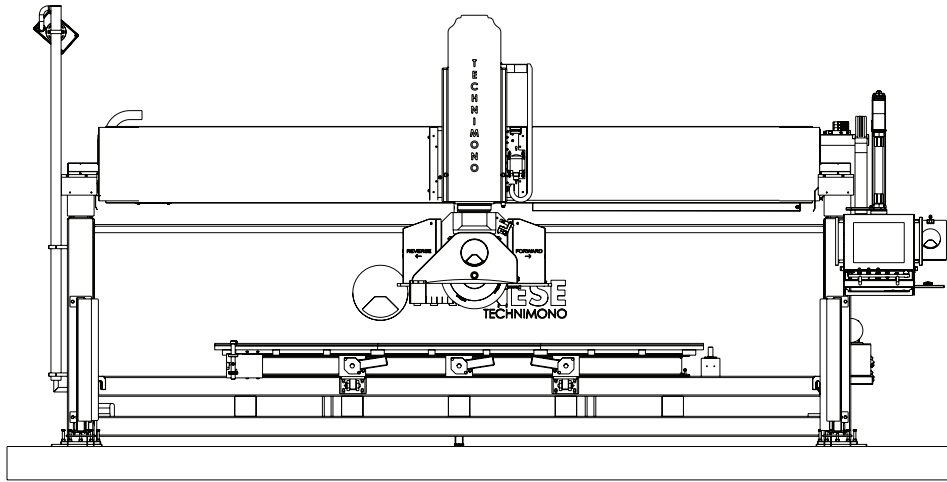
Lubrication is taken care of via an automated system which can be programmed to deliver as necessary.



Summary of Features

- Monoblock frame
- Full 5 axis CNC controlled saw
- Touchscreen control panel
- Easy to use interface and software
- CAD / CAM system
- Taglio Software - Advanced CAD/CAM Software solution option available
- Less waste - Accurate programming of cuts can result in less waste
- Vacuum Manipulation
- Thickness measuring probe
- Blade measuring probe
- Onboard overhead camera
- Automatic lubrication system
- Hydraulic Tilting Table - Makes loading and unloading of slabs a whole lot easier
- Laser cutting guide - Provides a visual guide for blade positioning if operating in manual mode.
- After sales service
- Australian company
- Local supply of spare parts
- Remote access for troubleshooting help

TECHNIMONO BRIDGE SAW



TECHNICAL SPECIFICATIONS

DIMENSIONS OF INSTALLED MACHINE	METRIC	IMPERIAL
LENGTH	6838 mm	269.2 in
WIDTH	5977 mm	235.3 in
HEIGHT	3304 mm	130.1 in
WEIGHT	5300 kg	13000 lb

TABLE	METRIC	IMPERIAL
LENGTH	3600 mm	141.7 in
WIDTH	2000 mm	78.7 in
HEIGHT	850 mm	33.5 in
ROTATION	NO	NO
TILT	YES	YES

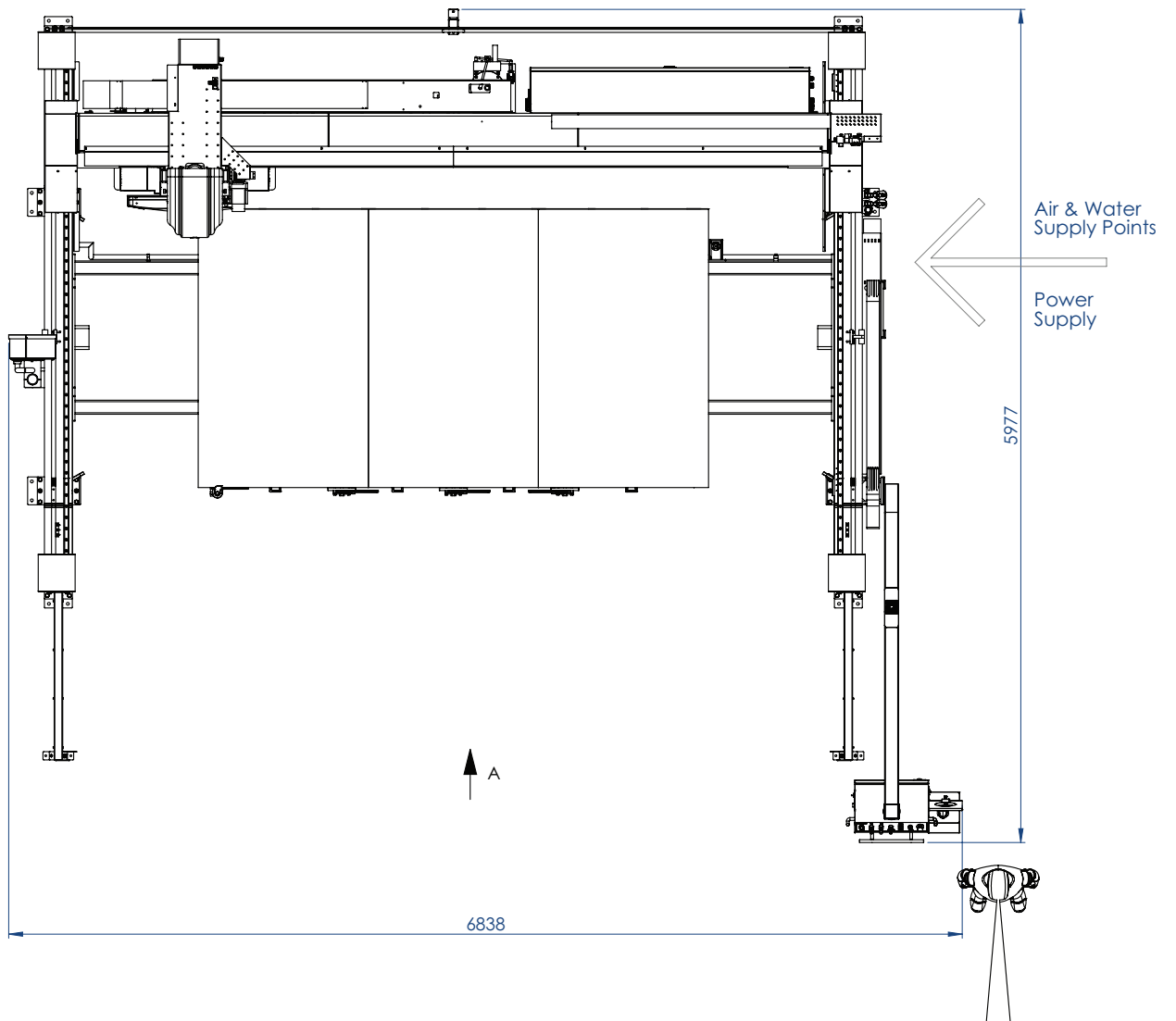
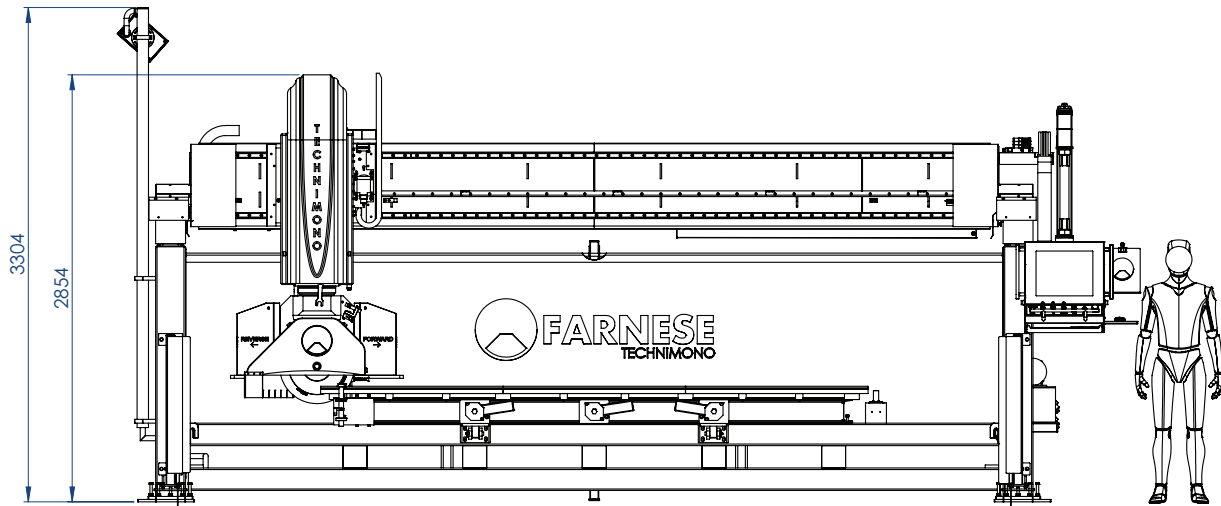
FEATURES & FEEDS	METRIC	IMPERIAL
X STROKE (CROSS TRAVEL STROKE)	3800 mm	149.6 in
Y STROKE (LONG TRAVEL STROKE)	2300 mm	90.6 in
Z STROKE (HEAD UP AND DOWN)	450 mm	17.7 in
BLADE DIAMETER (RECOMMENDED)	450 mm	18 in
BLADE DIAMETER (MAX)	600 mm	24 in
BLADE SHAFT DIAMETER	60 mm	2.36 in
BLADE TILT	0 - 90°	0 - 90°
HEAD ROTATION	0 - 360°	0 - 360°
DRILLING CAPABILITY	YES	YES
PHOTO CAMERA	YES	YES
LASER CUTTING GUIDE	YES	YES
THICKNESS PROBE	YES	YES
VACUUM MANIPULATORS / MATERIAL POSITIONING	YES	YES
TOUCH SCREEN	YES	YES
GALVANIZED RAILS AND TABLE	YES	YES
AUTOMATIC LUBRICATION	YES	YES
MICROSOFT WINDOWS AND DXF CAD COMPATIBLE	YES	YES
MAIN SPINDLE POWER	11 kW	20 hp
MAIN SPINDLE SPEED	800 - 3000 rpm	800 - 3000 rpm
POWER REQUIRED	400v 3ph 50Hz	208v 3ph 60Hz
	32A+ Neutral	60A

CONNECTIONS REQUIRED (SUPPLIED BY CUSTOMER)
POWER, WATER, COMPRESSED AIR

TOOLING | CONSULT YOUR LOCAL FARNESE DEALER FOR ANY TOOLING REQUIRED

Owing to the constant updating of our designs, descriptions and technical data shown in our drawings and folders are not binding. Possible alterations deemed by the makers as convenient will be effected at any time without previous notice.

DESIGNED FOR FUNCTION, BUILT TO LAST.





We Know That Support Is Important To You

Buying a new machine is a big commitment for anyone, and continued support throughout the life of that machine is vital.

Being an Australian company, Farnese carry a vast array of parts here in Australia to ensure that your machine always has the spares it needs. Enjoy peace of mind knowing that you'll be fully supported by Farnese and we'll always have you covered.

Farnese customers don't need to experience unnecessary machinery downtime waiting for remote assistance from other countries, as all the support and remote assistance is provided locally in Australia from our own qualified Technicians in Australian time.

With more Service Technicians in Australia than any of our competitors, our mission here at Farnese is to give you the best support in the industry. As we grow, we continue to recruit more and more qualified technicians, to further strengthen our position in the Stone Industry.

FARNESE AUSTRALIA PTY LTD 5 Heald Road, Ingleburn NSW 2565 Australia
ABN: 47 057 462 629 • ACN: 057 462 629
Phone: 1300 075 678 • www.farnese.com.au

DESIGNED FOR FUNCTION, BUILT TO LAST.